

- 1-FOR GENERAL NOTES SEE SHEET No. 4.
- 2-MATERIAL SHALL BE AS FOLLOWS:
  - a) SECTION : ASTM A-36
  - b) PLATE : ASTM A-283 GR.C
  - c) NUT : ASTM A-563
- 3-DIMENSIONS "L" & "H" TO BE DEFINED BY PIPING SUPPORT DESIGNER.
- 4-SPECIFIED LOAD ARE BASED ON LIMIT OF MOMENT ON AXIS "Y" AND FRICTION COEFFICIENT IS 0.3.

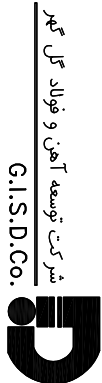
SE-07-----

- 1- ITEM NUMBER (A~D)
- 2- MEMBER "M"
- 3- LENGTH MARK
- 4- LENGTH "C"
- 5- HEIGHT MARK

| HEIGHT "H" |      |
|------------|------|
| CODE       | mm   |
| 03         | 300  |
| 04         | 400  |
| 05         | 500  |
| 06         | 600  |
| 07         | 700  |
| 08         | 800  |
| 09         | 900  |
| 10         | 1000 |
| 11         | 1100 |
| 12         | 1200 |
| 13         | 1300 |
| 14         | 1400 |
| 15         | 1500 |

|      |          |                   |              |         |              |
|------|----------|-------------------|--------------|---------|--------------|
|      |          |                   |              |         |              |
|      |          |                   |              |         |              |
|      |          |                   |              |         |              |
| 00   | 5.6.2024 | ISSUED FOR REVIEW | F.No:0149104 | M.G.H   | L.Zeynepoeti |
| Rev. | Date     | PURPOSE OF ISSUE  | Prepared     | Checked | Approved     |

COMPANY:



GISDCo.

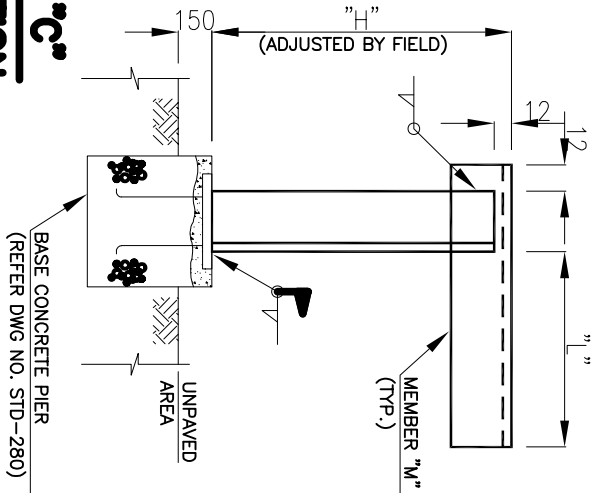
INTERNAL PROCEDURE

DRAWING TITLE:

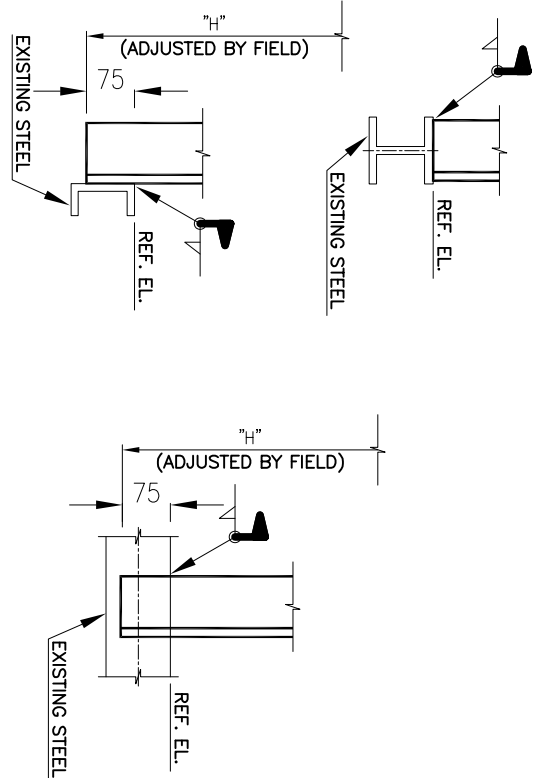
STANDARD FOR PIPE SUPPORT DRAWING

| Contract No. | Document No. | Class | Rev. | Size | Scale | Sheet No. |
|--------------|--------------|-------|------|------|-------|-----------|
|              |              |       |      |      |       |           |

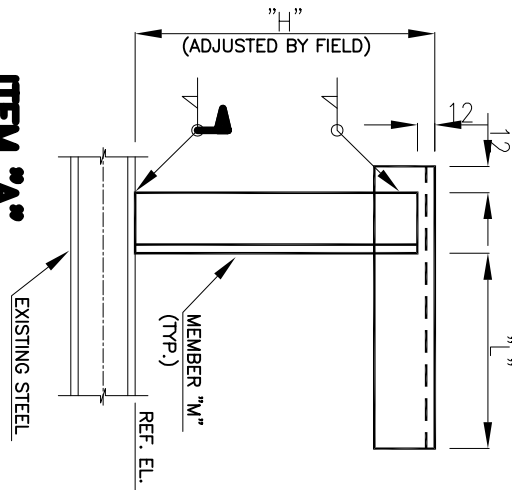
ITEM "C"  
ELEVATION



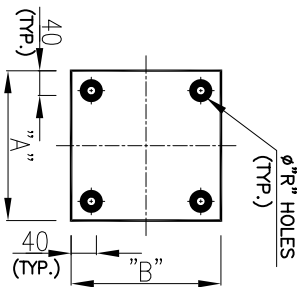
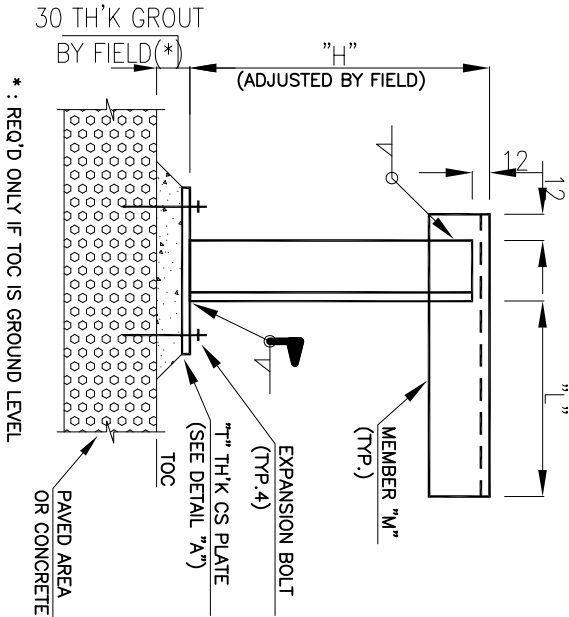
ALTERNATIVE CONNECTIONS FOR ANGLE CHANNEL MEMBERS



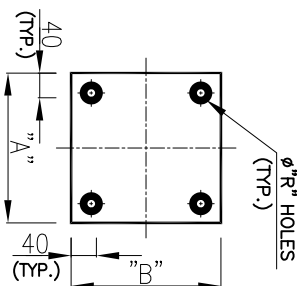
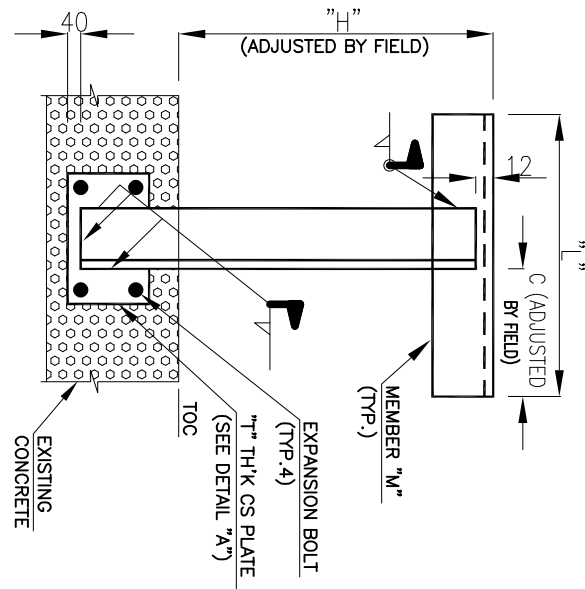
ITEM "A"  
ELEVATION



ITEM "B"  
ELEVATION



ITEM "D"  
ELEVATION



| ITEM | MEMBER      | H(mm) | Allowable load, F <sub>y</sub> (kg) |            |
|------|-------------|-------|-------------------------------------|------------|
|      |             |       | L≤500                               | 500<L≤1000 |
| 1    | L80x80x8    | 1000  | 250                                 | -          |
| 2    | L80x80x8    | 1500  | 200                                 | -          |
| 3    | L100x100x10 | 1000  | 500                                 | -          |
| 4    | L100x100x10 | 1500  | 400                                 | -          |
| 5    | UPN 160     | 1000  | 700                                 | 450        |
| 6    | UPN 160     | 1500  | 500                                 | 350        |
| 7    | HEA 100     | 1000  | 750                                 | 500        |
| 8    | HEA 100     | 1500  | 600                                 | 400        |
| 9    | HEA 160     | 1000  | 1700                                | 1300       |
| 10   | HEA 160     | 1500  | 1400                                | 1000       |

| NO. | MEMBER "M"  | EXPANSION BOLT | "A" | "B" | "T" | ØR | BASE CONCRETE PIER TYPE NO. |
|-----|-------------|----------------|-----|-----|-----|----|-----------------------------|
| 1   | L80x80x8    | M10x107        | 200 | 200 | 10  | 12 | CP-A2                       |
| 2   | L100x100x10 | M12x120        | 250 | 250 | 12  | 15 | CP-A2                       |
| 3   | UPN 160     | M16x148        | 300 | 250 | 15  | 20 | CP-A2                       |
| 4   | HEA 100     | M12x120        | 250 | 250 | 12  | 15 | CP-A3                       |
| 5   | HEA 160     | M16x148        | 300 | 300 | 15  | 20 | CP-A4                       |

| LENGTH "L" |      |
|------------|------|
| CODE       | mm   |
| 03         | 300  |
| 04         | 400  |
| 05         | 500  |
| 06         | 600  |
| 07         | 700  |
| 08         | 800  |
| 09         | 900  |
| 10         | 1000 |